



COMPANY OVERVIEW

*DELIVERING ON THE PROMISE OF
MEDICAL INNOVATION FOR MORE THAN 30 YEARS*

**Boston
Scientific**

SAFE HARBOR:

This presentation contains forward-looking statements within the meaning of Section 21E of the Securities Exchange Act of 1934. Forward-looking statements may be identified by words like “anticipate,” “expect,” “project,” “believe,” “plan,” “estimate,” “intend” and similar words. These forward-looking statements are based on our beliefs, assumptions and estimates using information available to us at the time and are not intended to be guarantees of future events or performance. If our underlying assumptions turn out to be incorrect, or if certain risks or uncertainties materialize, actual results could vary materially from the expectations and projections expressed or implied by our forward-looking statements. Factors that may cause actual results to differ materially from those contemplated by the statements in this presentation can be found in our latest Form 10-K and Form 10-Q under the heading “Risk Factors”. Participants are cautioned not to place undue reliance on any of our forward-looking statements. We disclaim any intention or obligation to publicly update or revise any forward-looking statements to reflect any change in our expectations or in events, conditions, or circumstances on which they may be based, or that may affect the likelihood that actual results will differ from those contained in the forward-looking statements.

INSTRUCTIONS FOR USE:

This Corporate presentation may be used with internal and external audiences to provide a general overview of Boston Scientific. Typical audiences include recruiting professionals and partners/vendors but should exclude physicians. Talking points have been provided in the notes section. This presentation may not be altered or repurposed without written consent from Corporate Communications and the Corporate Legal and Regulatory departments. While all information incorporated is publicly available, we ask that you use discretion in the dissemination of electronic or printed versions of this presentation to limit exposure to competitive audiences.

BOSTON SCIENTIFIC CORPORATION PROFILE

GENERAL FACTS:

- Founded in 1979 with 38 employees and \$2 million in sales
- Now one of the world's largest medical device companies
- Portfolio of more than 13,000 products
- Added Cardiac Rhythm Management through acquisition of Guidant Corporation in 2006
- Corporate HQ: Natick, MA
- Regional HQs: Paris, Tokyo
- Website: www.bostonscientific.com

PRODUCT INNOVATION:

- More than 15,000 Patents issued worldwide
- \$939 Million invested in R&D ('10)

FINANCIALS:

- \$7.8 Billion Revenue ('10)
- \$1.0 Billion Net Income¹ ('10)
- 13% CAGR² ('03-'10)
- NYSE: BSX

DEMOGRAPHICS:

- 25,000 Employees
- Sales forces in more than 40 countries
- 17 manufacturing facilities worldwide

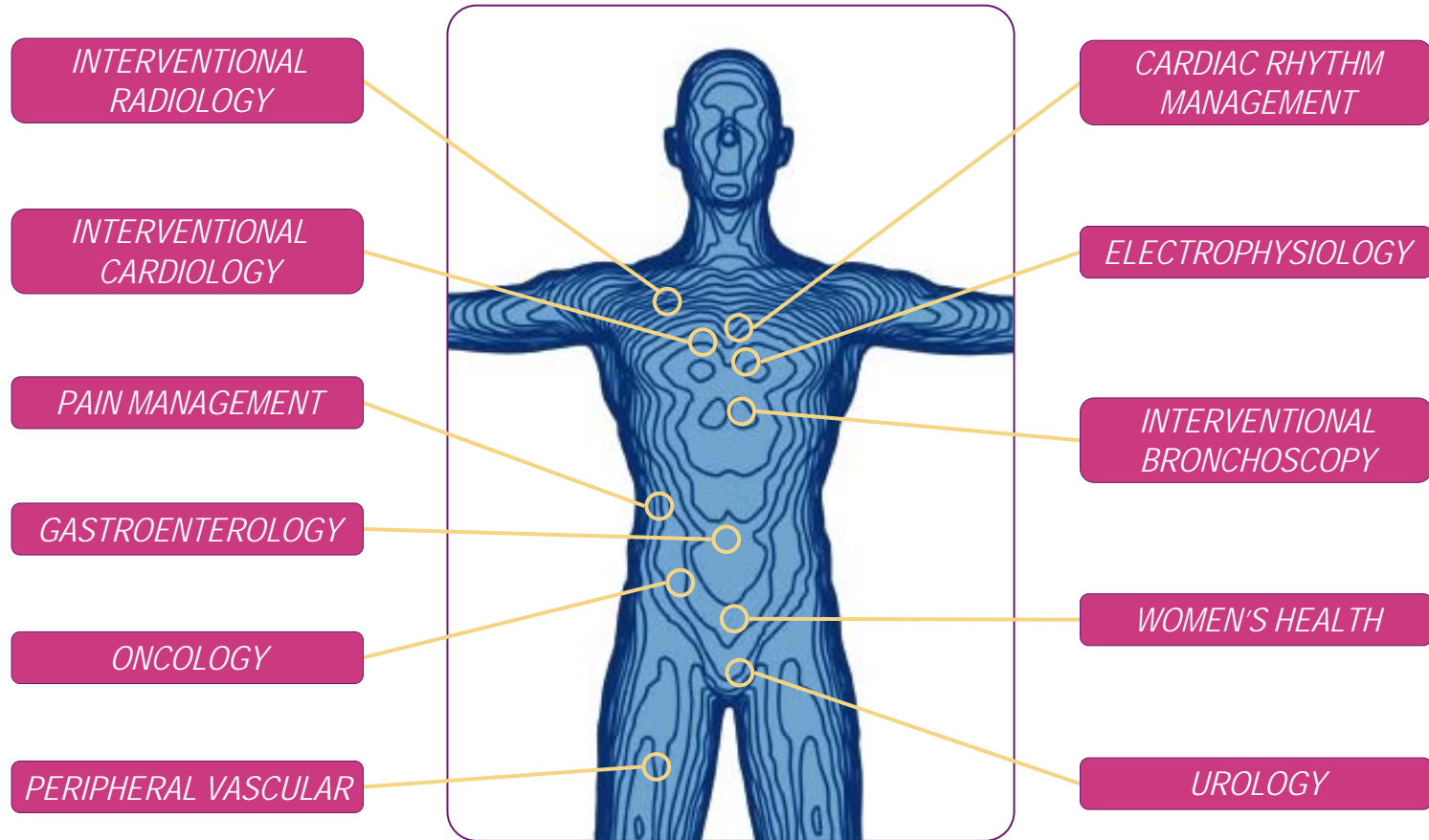
1. Excluding acquisition, litigation, divestiture, restructuring and other charges
2. Compound Annual Growth Rate

Boston Scientific's mission is to improve the quality of patient care and the productivity of health care delivery through the development and advocacy of less-invasive medical devices and procedures.

This is accomplished through the continuing refinement of existing products and procedures and the investigation and development of new technologies that can reduce risk, trauma, cost, procedure time and the need for aftercare.



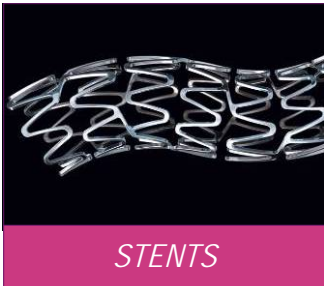
*BOSTON SCIENTIFIC IS ADVANCING PATIENT CARE
ACROSS A BROAD RANGE OF MEDICAL SPECIALTIES*



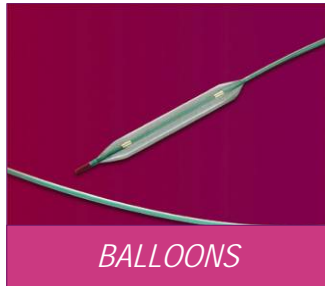
THREE DECADES OF INNOVATION HAVE LED TO A BROAD AND DEEP PORTFOLIO OF MORE THAN 13,000 PRODUCTS

Boston Scientific

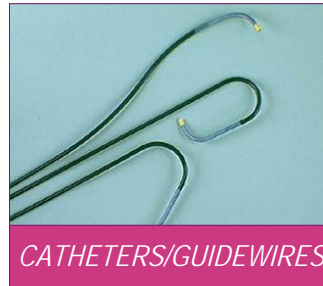
SAMPLING OF BOSTON SCIENTIFIC'S PRODUCT PORTFOLIO



STENTS



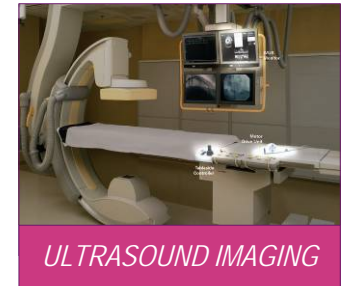
BALLOONS



CATHETERS/GUIDEWIRES



EMBOLIC PROTECTION



ULTRASOUND IMAGING



PACEMAKERS/ICDs/CRTs



ABLATION



PERIPHERAL DILATATION



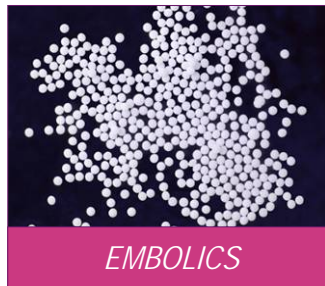
ENDOSCOPIC STENTS



NEUROSTIMULATION



BIOPSY SYSTEMS



EMBOLICS



STONE RETRIEVAL

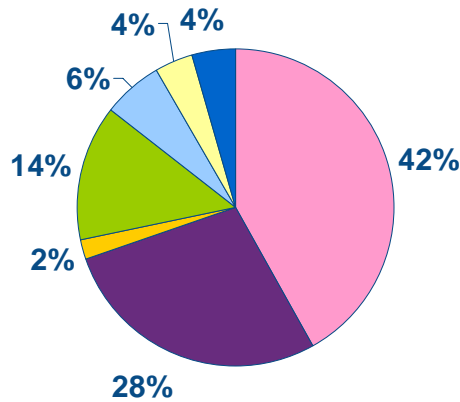


LITHOTRIPSY SYSTEMS



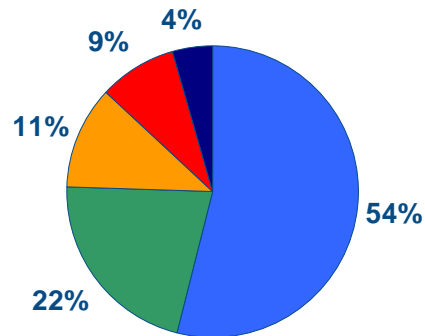
PELVIC FLOOR REPAIR

2010 COMPANY REVENUES \$7.8 BILLION



Worldwide Sales by Product Category (\$M)

Cardiovascular	\$3,271
Cardiac Rhythm Management	\$2,327
Electrophysiology	\$147
Endoscopy	\$1,079
Urology/Women's Health	\$481
Neuro modulation	\$304
Divested businesses	\$344



Worldwide Sales by Geographic Segment (\$M)

Domestic	\$4,215
EMEA	\$1,682
Japan	\$887
Inter-Continental	\$678
Divested businesses	\$344

Note: The Neurovascular businesses was divested as of 1/3/2011.

INTERVENTIONAL CARDIOLOGY IS PART OF THE NEW CRV GROUP AND INCLUDES OUR DRUG-ELUTING STENT FRANCHISES

INTERVENTIONAL CARDIOLOGY

Medical Conditions

- Cardiovascular Diseases
- Coronary Artery Disease
- Acute Myocardial Infarction

Solutions

- Drug-Eluting Stents
- Bare-Metal Stents
- Catheters, Balloons
- Guidewires
- Coronary Atherectomy



TAXUS® Liberté® Paclitaxel-Eluting Coronary Stent



PROMUS® Everolimus-Eluting Coronary Stent¹



Element™ Coronary Stents² (Paclitaxel & Everolimus)

- **Boston Scientific is the only company to offer two drug-eluting stent (DES) portfolios with distinct drug platforms (Paclitaxel and Everolimus)**
- **Boston Scientific is the worldwide leader in DES with \$1.5 billion in 2010 revenue**
- **Approx. 7 million Boston Scientific drug-eluting stents have been implanted worldwide**

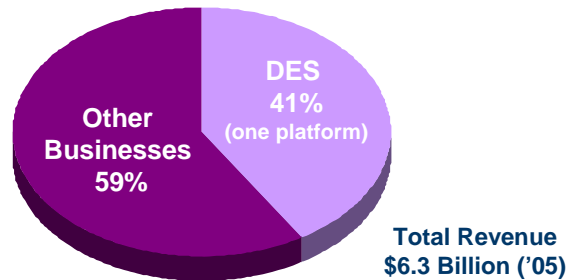
	Second-Generation	Third-Generation ²
Paclitaxel	TAXUS® Liberté® TAXUS® Liberté® Atom™ TAXUS® Liberté® Long	TAXUS® Element™
Everolimus	PROMUS®	PROMUS® Element™

1. PROMUS is a trademark of Boston Scientific Corp. or its affiliates. PROMUS® stent is a private-labeled XIENCE® V Everolimus Eluting Coronary Stent System manufactured by Abbott and distributed by Boston Scientific Corp.

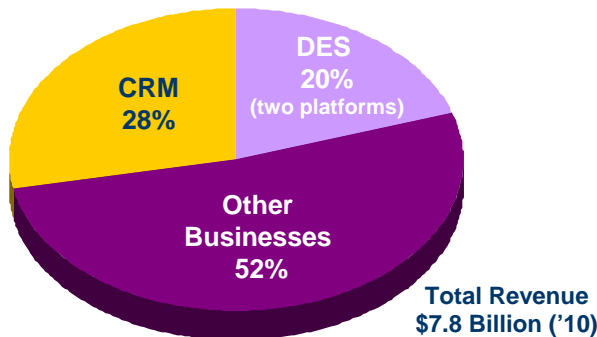
2. CAUTION: Investigational devices. Limited by Federal law to investigational use. Not available for sale in the United States.

CARDIAC RHYTHM MANAGEMENT (CRM)

Boston Scientific Worldwide Revenues



Pre-Guidant



Post-Guidant

Medical Conditions

- Cardiac Arrhythmias
- Sudden Cardiac Arrest
- Heart Failure

Solutions

- Pacemakers
- Implantable Cardioverter Defibrillators (ICDs)
- Cardiac Resynchronization Therapy (CRT) Devices
- Patient Management Systems



COGNIS[®] CRT-D and TELIGEN[®] ICD



LATITUDE[®] Patient Management System

Note: Electrophysiology business reported as part of Other Businesses in 2005 and part of CRM in 2010.

ENDOVASCULAR UNIT

Peripheral Interventions

Medical Conditions

- Peripheral Vascular Diseases
- Pulmonary Embolisms

Solutions

- Carotid Artery Stenting
- Embolic Protection
- Balloon Catheters
- Vascular Protection
- Iliac Solutions
- Renal Solutions



WALLSTENT® and
Adapt™1 Carotid Stents

Electrophysiology

Medical Conditions

- Heart Rhythm Disorders

Solutions

- Cardiac Tissue Ablation
- Cardiac Mapping
- Pericardiocentesis



Blazer® Prime
Ablation Catheter

Imaging

Solutions

- Coronary Intravascular
Ultrasound (IVUS)



iLab® Ultrasound Imaging System

Note: The Neurovascular business was part of the Endovascular Unit in 2010 but

ENDOSCOPY REPRESENTS 14% OF BSC'S WORLDWIDE REVENUE AND HAS DELIVERED DOUBLE-DIGIT GROWTH OVER THE PAST 10 YEARS

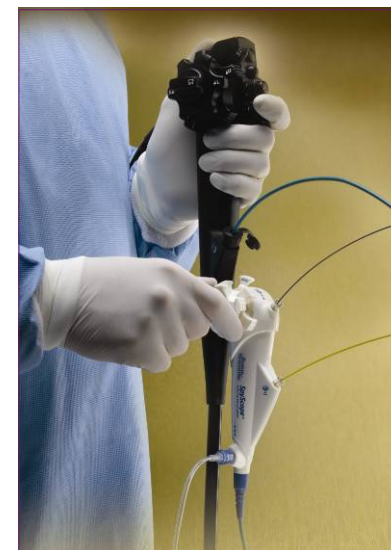
ENDOSCOPY DIVISION

Medical Conditions

- Malignant & Benign Tumors
- Gastrointestinal Diseases
- Pulmonary Diseases
- Gastrointestinal Cancers
- Abscesses
- End Stage Renal Disease

Solutions

- Balloon Dilation
- Stenting
- ERCP/Cholangioscopy
- Biliary, Urinary Drainage
- Biopsy and Polypectomy
- Hemostasis
- Radio Frequency Ablation
- Enteral Feeding



*SpyGlass™ Direct
Visualization System*

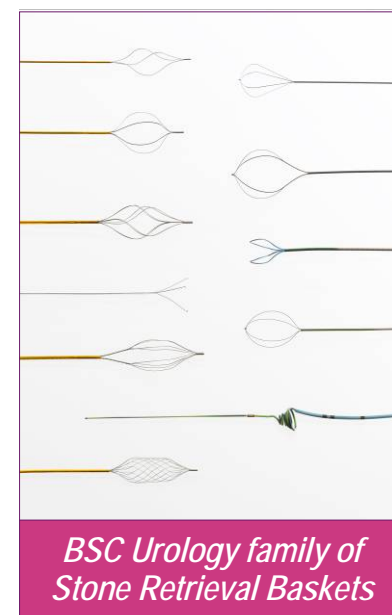
UROLOGY & WOMEN'S HEALTH DIVISION

Medical Conditions

- Urinary Incontinence
- Benign Prostatic Hyperplasia
- Gallstones & Urinary Stone Disease
- Uterine Fibroids & Menorrhagia
- Pelvic Organ Prolapse

Solutions

- Microwave Thermodilatation
- Endometrial Ablation
- Holmium Laser Ablation of the Prostate (HoLAP)
- Stone Retrieval/Lithotripsy
- Pelvic Floor Reconstruction
- Mid-Urethral Slings
- Urethral Bulking
- Uterine Fibroid Embolization



NEUROMODULATION DIVISION

Medical Conditions

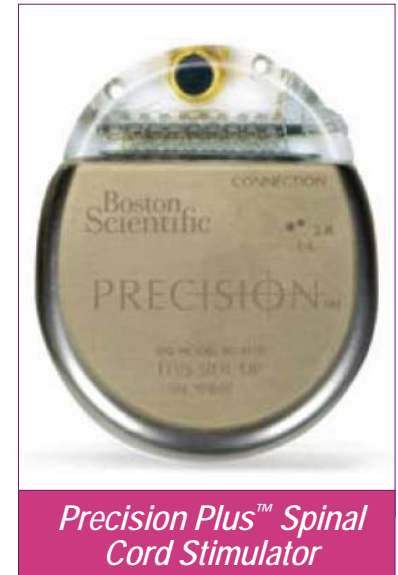
- Chronic Pain
- Neurological Disorders

Solutions

- Neurostimulation
- Rechargeable Spinal Cord Stimulators
- Microstimulators

Emerging Indications (under study)

- Migraines
- Over Active Bladder
- Obesity
- Deep Brain Stimulation



*Precision Plus™ Spinal
Cord Stimulator*

WE ARE COMMITTED TO IMPROVING PATIENT CARE WITH OUR PRIORITY GROWTH INITIATIVES THAT ADDRESS UNMET NEEDS

GROWTH AREA	TECHNOLOGIES BEING EXPLORED OR DEVELOPED BY BSC	POTENTIAL BENEFITS
ATRIAL FIBRILLATION	<i>Developing a new technique to treat atrial fibrillation using a cryogenic balloon on the end of a catheter</i>	<i>Less demanding and less time-consuming than current radiofrequency ablation techniques</i>
SUDDEN CARDIAC ARREST	<i>Leveraging our ICD technologies to explore next-generation products and new features to create a new standard of effectiveness</i>	<i>Improve effectiveness and ease of implanting cardiac devices</i>
ACUTE ISCHEMIC STROKE	<i>Leveraging our vascular technologies and exploring a variety of new treatment options including stenting</i>	<i>Allow blood flow to be restored faster, reducing damage to the brain and giving physicians more time</i>
CORONARY ARTERY DISEASE	<i>Leverage leading position in drug-eluting stents to develop new stents that will minimize amount of polymer needed to deliver the drug</i>	<i>Bioabsorbable polymer dissolves as drug is released, leaving only a bare-metal stent</i>
PERIPHERAL VASCULAR DISEASE	<i>Developing drug-coated balloon that allows transfer of drug to treatment site within the vessel</i>	<i>Delivered drug remains active for three months, potentially eliminating need for a stent</i>
STRUCTURAL HEART DISEASE	<i>Exploring technologies that allow physicians to repair or replace heart valves via interventional procedures</i>	<i>Avoid open-heart surgery, reducing costs and recovery time</i>
VASCULAR CLOSURE	<i>Leveraging interventional expertise to develop a vascular closure device that improves on currently available technologies</i>	<i>Shorten and simplify process to close opening in femoral artery</i>
HYPERTENSION	<i>Exploring several device-based treatments, including nerve ablation and electrical stimulation</i>	<i>Alternative for patients not responding to drug therapy</i>
WOMEN'S HEALTH	<i>Leverage current expertise to pursue various opportunities for device-based solutions to unmet women's health needs</i>	<i>Less-invasive products help patients recover more quickly and return to normal, healthy lives</i>
ENDOLUMINAL SURGERY	<i>Developing tools to make less-invasive abdominal surgery possible and offer an alternative to laproscopic tools</i>	<i>Improved access and manipulation compared to current laproscopic instruments</i>
DIABETES/OBESITY	<i>Leveraging current technologies to explore less-invasive treatment options that focus on endoscopic implants and electrical stimulation</i>	<i>Avoid highly invasive gastric bypass surgery</i>
ENDOSCOPIC PULMONARY INTERVENTION	<i>Exploring technologies that would help restore and increase lung function for asthma and emphysema patients</i>	<i>Improve quality of life for an estimated nine million patients worldwide with these conditions</i>
DEEP BRAIN STIMULATION	<i>Exploring use of our Neuromodulation technologies to treat a variety of other conditions including Parkinson's disease and depression</i>	<i>Expand non-pharmaceutical treatment options for patients with debilitating diseases</i>

- Major investments have established clinical science as a successful and respected core competency for Boston Scientific
- Success built on carefully designed trials that support evidence-based medicine to help inform decision making
- Approximately 75 active or planned clinical studies
- More patients enrolled in DES clinical trials than any other company
- FDA Advisory Panel unanimously recommended expanded indication for BSC's CRT-Ds based on landmark MADIT-CRT trial
- More than 80% of U.S. ICD or CRT-D patients first indicated for therapy by a BSC-sponsored clinical trial

- Boston Scientific and the **Boston Scientific Foundation, Inc.** contribute time, expertise and financial support to a wide variety of charitable organizations
- The Foundation supports local **non-profit organizations** in our communities, **employee children scholarships** and **medical education fellowships** throughout the U.S.
- Our community grants support programs aimed at improving access to **quality health care** and **educational opportunities** in underserved communities
- Last year the Boston Scientific Foundation awarded more than **85 community grants** and **100 medical fellowships**
- Our employees continue to support and participate in numerous awareness and advocacy programs worldwide, including **World Diabetes Day** and the **American Heart Association's** national awareness events





THANK YOU

Boston
Scientific